



SOUTH LANARKSHIRE
Leisure & Culture

EAST KILBRIDE ARTS CENTRE TECHNICAL INFORMATION

South Lanarkshire Leisure and Culture SCIO is a recognised Scottish Charity, No. SC032549
Delivering services on behalf of South Lanarkshire Council
Registered Office: Floor 5, Council Offices, Almada Street, Hamilton, ML3 0EW

This document was last updated August 2025

YOUR CONTACTS

Operations Officer (West)

Email

Tel

Raymond Anderson

Raymond.Anderson@SouthLanarkshireLeisure.co.uk

01355 26 1000

Senior Theatre Technician

Email

Tel

David Neil

David.Neil@SouthLanarkshireLeisure.co.uk

01355 26 1000

TECHNICAL NOTES

Standard Staffing Provision

East Kilbride Arts Centre will provide one technician for all technical rehearsals and show calls. The technician on duty will be available to operate either lighting or sound for rehearsals and performances if required. Additional technical staff are available but may incur an additional charge. Any additional staffing requirements should be discussed with the theatre technician at least 21 days prior to your event.

All visiting companies must provide a competent person to liaise with Arts Centre technical staff prior to their get-in and to oversee their technical requirements during the get-in and rehearsals.

Pre-Rigging

Where scheduling allows, the technical staff will endeavour to pre-rig for visiting companies. Lighting plans/requirements must be provided one week in advance to facilitate any pre-rigging.

Get-Outs

The get-out should be scheduled to start as soon as possible after the final performance, unless otherwise arranged with the venue management. Any equipment to be left in the venue after the get-out for collection later must be agreed prior to the event.

Fire Exits

1.3 metres of unobstructed space must be left clear at the front of the seating bank (if used) to facilitate access for our patrons and provide a statutory means of access to the emergency exit stage right. Please refer to the Studio Plan and if in any doubt please contact us.

Studio Theatre Configuration

The Studio Theatre can be configured in several ways to suit your event and capacity, from cabaret style round tables, to the raked seating bank, a standing performance, seated or a board room setup.

TECHNICAL SPECIFICATION

Performance Area

The Studio Theatre is a performance space which can double as a function room and a rehearsal space. The dimensions of the room are 7.65m by 11.85m, with approx. 5m to the lighting grid. When the seating bank is extended, this gives a performance area of 7.65m by 4m to the setting line with a further 1.3m to the seating bank. The 1.3m must be kept clear as a fire exit for audience members and cast.

The flooring is black up to the setting line and the walls are black painted block work.

The rear wall of the stage area has a set of black tabs on runners and a retractable projection screen (5.4m by 3.9m). The side walls of the stage have black tabs on a fixed bar.

Get In

The get-in for the Studio Theatre is at street level through a door 1.8m by 0.95m.

Parking

Parking is available for vans and cars in the Arts Centre car park free of charge.

Power

2x Single Phase 32A sockets available behind the stage, stage left

4x 13A sockets are available along the back wall of the stage

6x 15A sockets are available along the back wall of the stage with more on the lighting rig

LIGHTING

Desk	Avolites Tiger Touch II with Fader Wing
Dimming	48 ways of Zero88 Chilli dimming, 10A per channel DMX lines from the control room to DSL at floor level and USL at the grid
Profiles	2x 650w ETC Source 4 Profiles 36° 6x 575w ETC Source 4 Jr Zooms 25/50°
Fresnels	10x 75W Elumen8 MP75 RGBW Fresnels 3x 180W Elumen8 MP180 RGBALC Fresnels
Other	6x 500w Symmetrical Floods 5x 1kw Par Cans (CP62) 2x 1kw Floor cans (CP62)
Intelligent	5x Chauvet Colordash Par Hex 12 LED Pars 3x ADJ Focus Hybrid Moving Lights 6x Chauvet SlimPar H6 USB 12x Varytec Giga Bar 240 LED RGB
Haze	1x ADJ Entourage 1500w Tour Fazer

The safe working load for the lighting grid is 400kg evenly distributed.

SOUND

Desk	Soundcraft Si Compact 32
Playback	Apple Mac Mini running Qlab 4
Amps	Bose Power Match PM4250
Speakers	2x Bose 208 speakers permanently rigged stage left & right 2x Yamaha DSR118W 18" Active Subwoofer
Monitors	3x RCF Art 312 Self Powered Wedges
Other	Various Shure SM57, SM58, Beta 57, Beta 58 and Beta 52 microphones Various Boom Stands 4x BSS Active DI Boxes Various FX/Reverb Units Soundcraft Mini Stagebox 32 4x Trantec S5.3 Radio Mics (handheld or belt pack) + Receiver 4x Trantec S5.5 Radio Mics (belt pack) + Receiver

PROJECTION

Projector	Optoma ZU506Te (5500 ANSI lumens, 1920 x 1200 resolution) (permanently rigged) Epson EH-LS500B (4000 ANSI Lumens, 3840x2160 resolution)
Screen	Permanently rigged motorised screen upstage

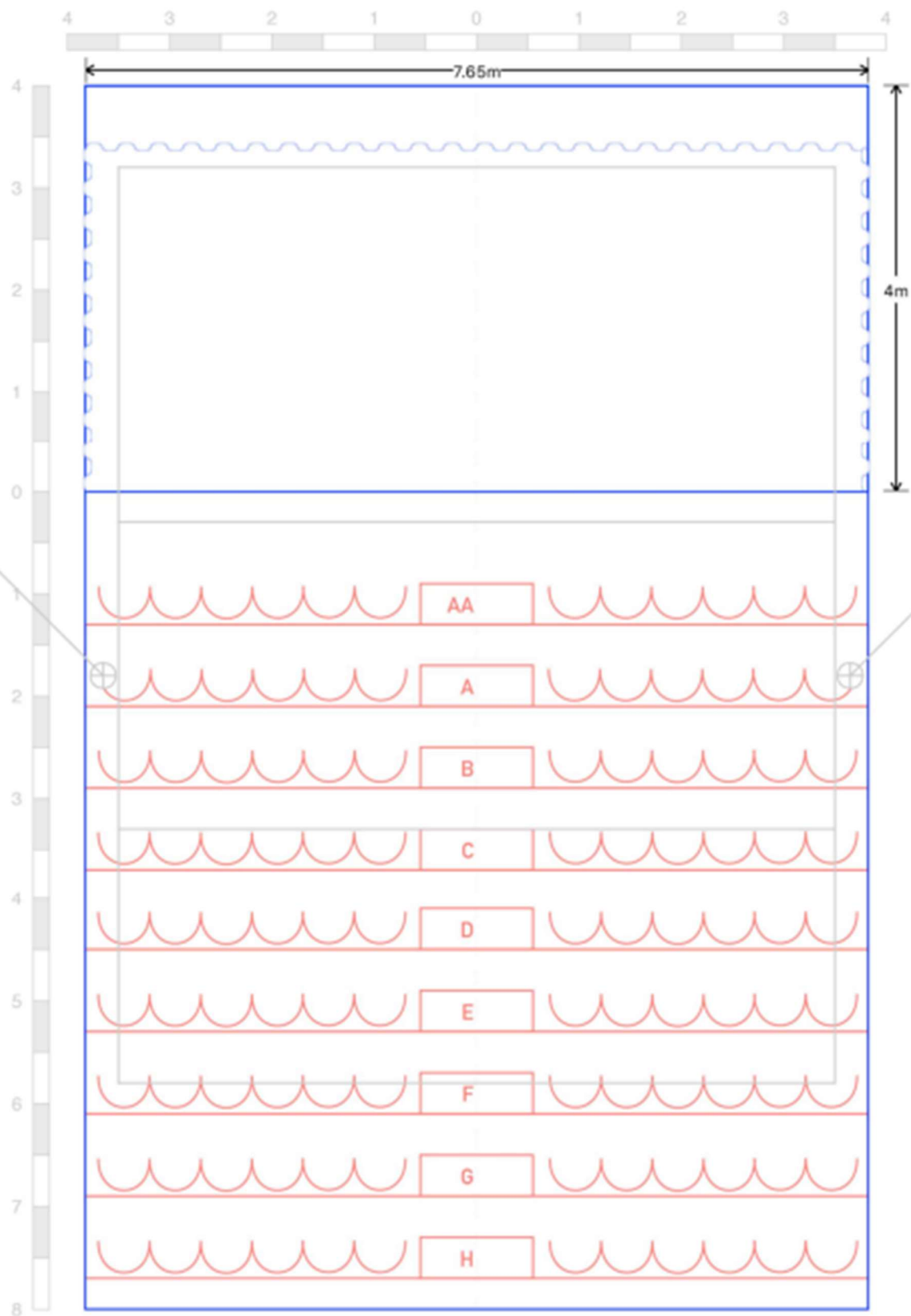
ROSTRA

Staging	7x SICO Staging Approximately 2.5 x 1.2m and approx. 45cm high Fixed height
----------------	---

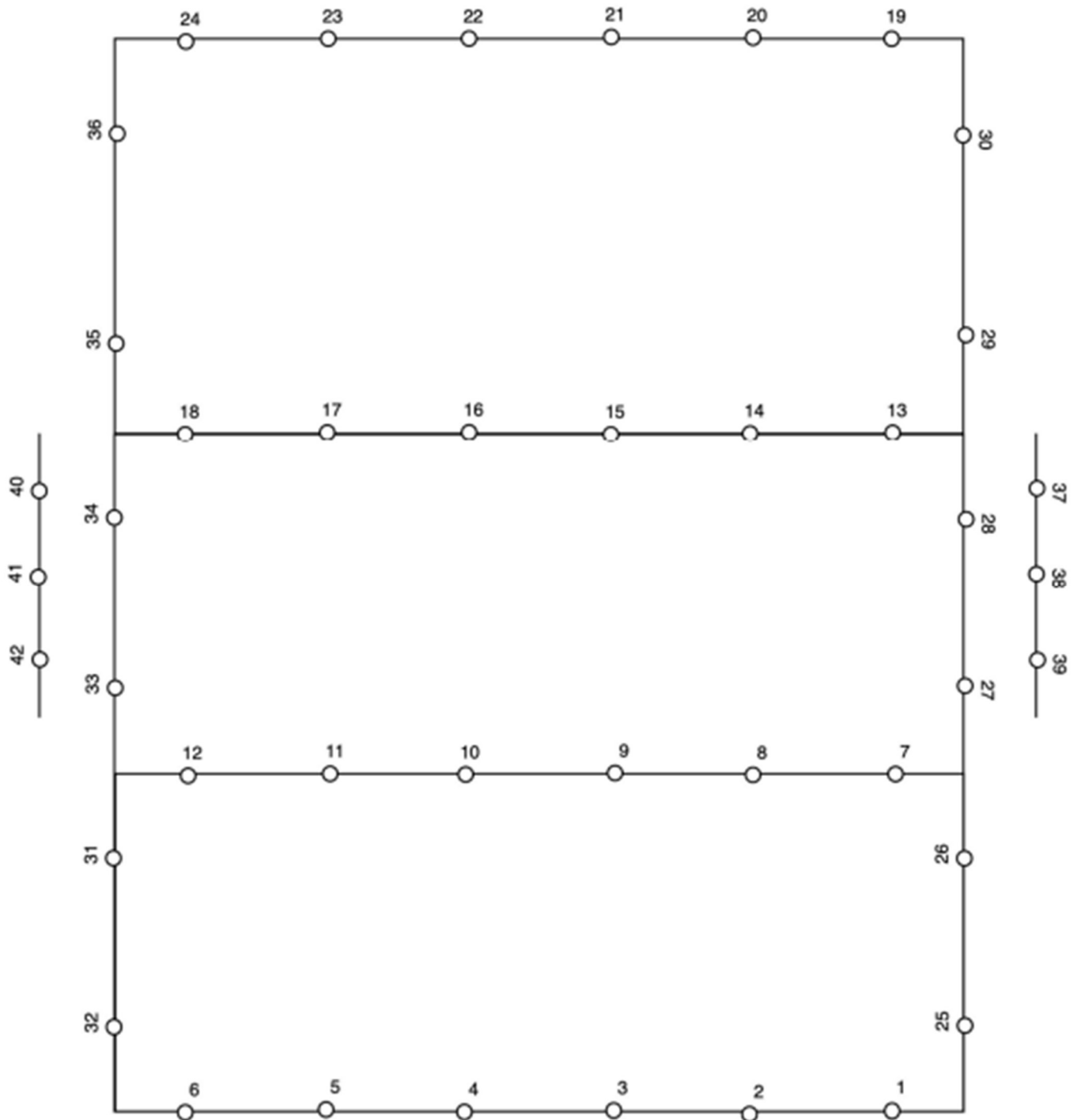
FLATTAGE

Staging	1 door frame flat with only a SR (left) side attached 9 8x4 flats 1 Window flat 2 door flats 1 half flat (potentially 8x2) 1 slightly wider, double sided, chunkier half flat 1 black masking flat
----------------	--

STUDIO PLAN



LIGHTING GRID



CONSTRUCTION (DESIGN & MANAGEMENT)

South Lanarkshire Leisure & Culture (SLLC) – CDM Regulations 2015

This information concerns the legal requirements in The Construction (Design and Management) Regulations 2015 (CDM 2015) with respect to theatre stage and production management.

In 2014 the Health & Safety Executive (HSE) decided that entertainment premises and events would be subject to and would have to comply with Construction Design and Management (CDM) regulations 2015, including ‘erection and dismantling of temporary structures’. Regulations came into force on the 6th of April 2015.

Generally, much of the work conducted on theatre and events, is currently enforced by the Local Authority (through their EHOs). The enforcement authority for Construction work however is the HSE, except in a few specified circumstances. So “theatre and event” construction sites would most likely be inspected by HSE Construction inspectors, rather than LA EHOs.

The HSE point out that there are several key elements to securing health and safety to satisfy CDM temporary construction including:

- a) Managing the risks to health and safety by applying the general principles of prevention
- b) Appointing the right people and organisations at the right time
- c) Making sure everyone has the information, instruction, training, and supervision they need to carry out their jobs in a way that secures health and safety
- d) Duty holders co-operating and communicating with each other and co-ordinating their work
- e) Consulting workers and engaging with them to promote and develop effective measures to secure health, safety, and welfare.

South Lanarkshire Leisure and Culture will engage with all users of our venues to assess whether these regulations apply to any specific show/event/hire using an initial questionnaire. Once the venue management have decided that CDM regulations apply, we will require any hirer/user to engage with the management and work together to ensure the regulations are met.

SLLC will require formal drawings/plans of stage layouts and the appropriate Risk Assessments for erection/construction & transportation of set/temporary structures being used in the production. Failure to provide this information in reasonable time and in an appropriate format may jeopardise the production.

On the day of a get-in/get-out, several additional safety measures will be put in place to ensure the CDM regulations are met. These include training and induction for all those involved in the work being carried out; a restriction on access to the area where work is taking place; appropriate PPE being worn at all times by everyone in the work area; the adherence to an agreed working plan and schedule by all persons in the work area and agreement on who is responsible for each stage of the tasks involved in the work.